

**NÖK kongress 2008**  
**Bäckaskog**

”Från mjölkbonde till företag”  
några ömma punkter

**Ben/klövar**

Jan-Åke Eriksson  
Svensk Mjök

**Sole Ulcer**



## Background

- Leg and hoof disorders cause lameness
- Animal welfare – Increased suffering of the cow
- Culled 6-8 %
- Production costs increase

## EBVs for hoof diseases since 2007

- SR and SH bulls
- Dermatitis, Heel horn erosion, Sole haemorrhage and Sole ulcer
- Hoof disease resistance, weights 0.1, 0.2, 0.2 and 0.5
- Klövsjukdomsresistens

## Hoof diseases resistens EBVs 2008-05-15

### Number of bulls

	SR	SH
Total	1506	2314
> 39 daug.	207	258

## Hoof Trimming Recording Scheme, Swedish Dairy Association

- 2003 an enhanced recording system
- Training of hoof trimmers
- Recording of findings by hoof trimmers in field

**Instructions for trimming report aimed to be scanned**

- A clean copy (first page under the original) of the report is used for scanning.
- Figures and number must be written carefully within the box.
- Numbers could be either right or left oriented
- Dirt or notes out of the scanning area (boxes) will not disturb scanning.
- When mistakes are made just correct the faulty box or cross over the cow ID
- Name and address is voluntarily as long as the EU number is correct. Name and address could however be practical to have on at least the first form in a series.
- It is of most interest to record the most common lesions on a herd basis. For ulceration which is a more severe disease it is of more interest for the farmer and foot trimmer to know which foot that is affected.
- Grading is just / for a slight lesion or X for a severe lesion. That means that a / can be increased to a X during the trimming if the lesion becomes worse
- Other less common lesions and diseases as well as treatments can be noted by more experienced foot trimmers. Codes are printed according to special list.

**Trimming report**

Name and address

Ass no. Herd no / EU Trimmer Year Month Day Page

9 9 9 9 9 9 0 1 9 9 1

Name, Address, telephone (no scan)

Careful ID figures

Farm EU number mandatory

Ear tag ID	OK	Dermat	Erosion	Wounds	LEUC	LEUC	RRUC	Locome	Conform	Other	Treatm	Treatm	Notes
9 9 9		/		X			X	X		S	C	A	
9	X												

I = Small lesion  
X = Severe lesion  
For most severe foot of the cow

Optional information


Sole ulceration for each foot




svensk mjölk  
SWEDISH DAIRY ASSOCIATION

## Dermatitis, DE

/ = redden, secretion, eschars

X = bleeding circular eczema, aches



svensk mjölk  
SWEDISH DAIRY ASSOCIATION

## Heel horn erosion, HE



/ = shallow erosion in the bulb horn

X = deep cracks (to the dermis)



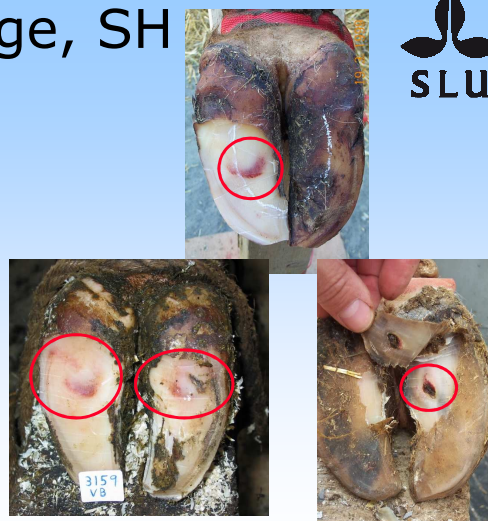
svensk mjölk  
SWEDISH DAIRY ASSOCIATION

## Sole haemorrhage, SH



/ = solitary/shallow bleeding

X = several/deep bleedings



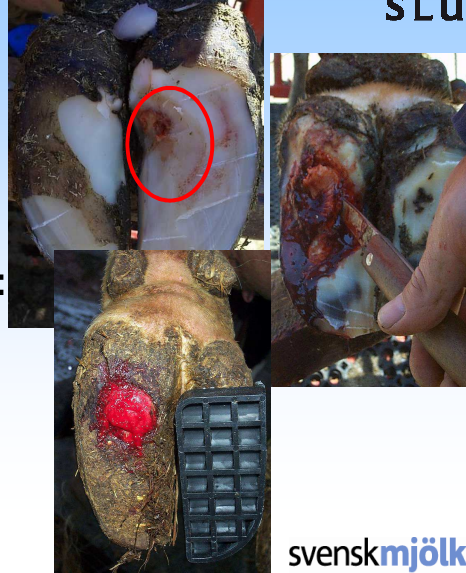
svensk mjölk  
SWEDISH DAIRY ASSOCIATION

## Sole ulcer, SU



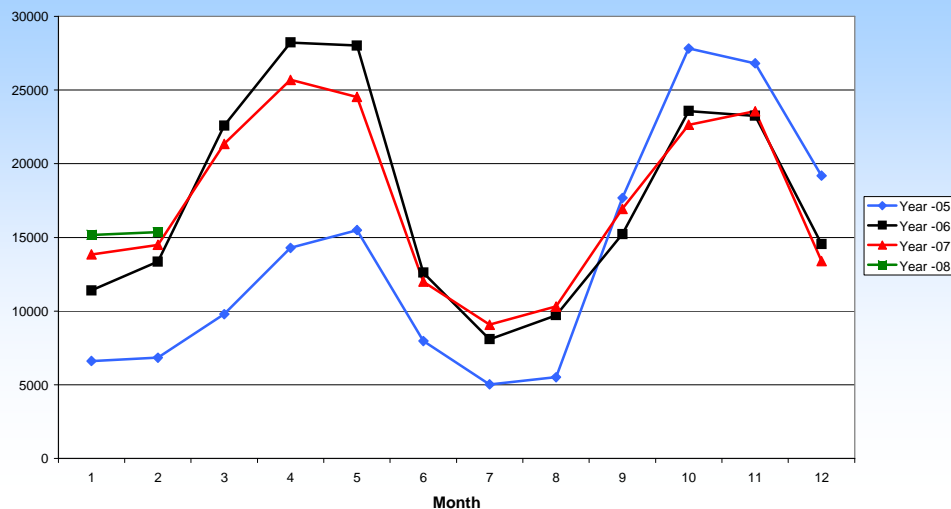
/ = sole, toe, white line:  
dermis lay bare,  
but looks fresh

X = sole, toe, white line:  
decolorized dermis,  
secretes/scar tissue  
/swollen

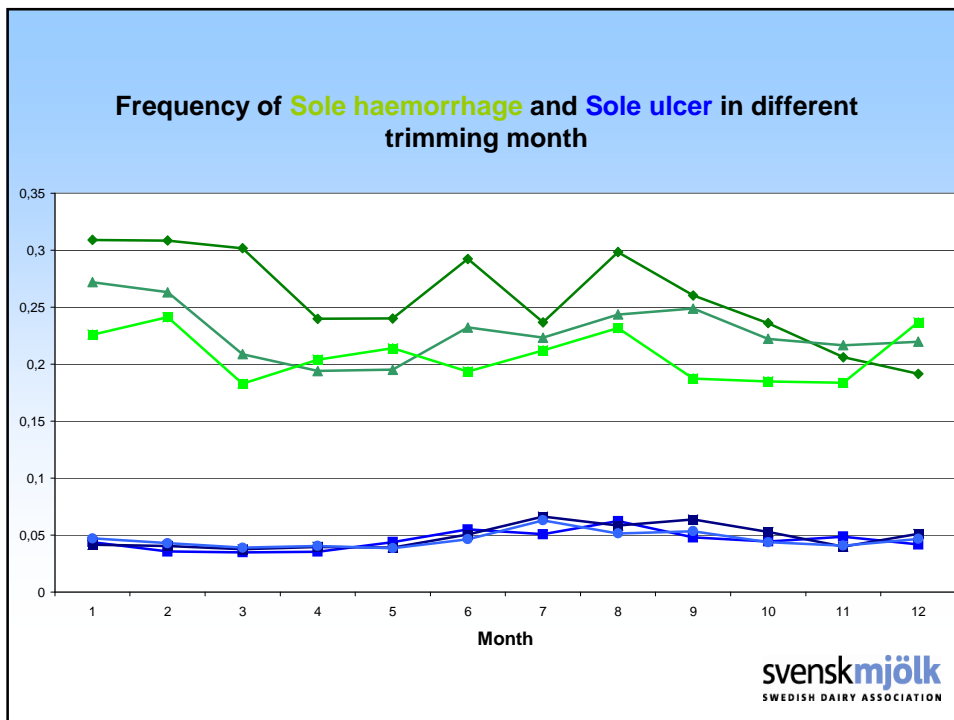
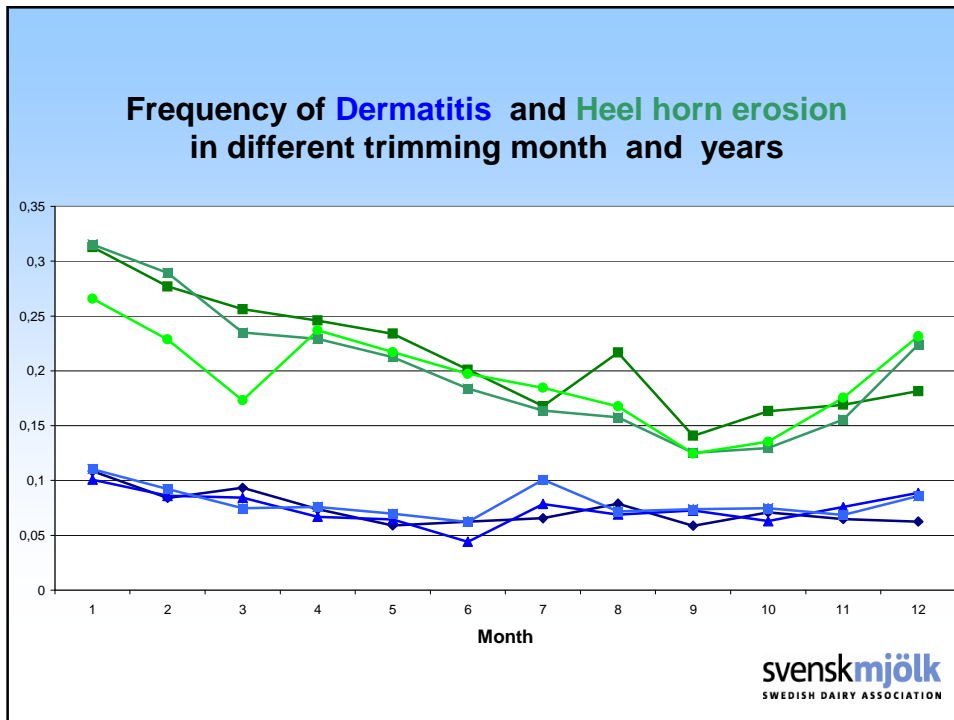


svensk mjölk  
SWEDISH DAIRY ASSOCIATION

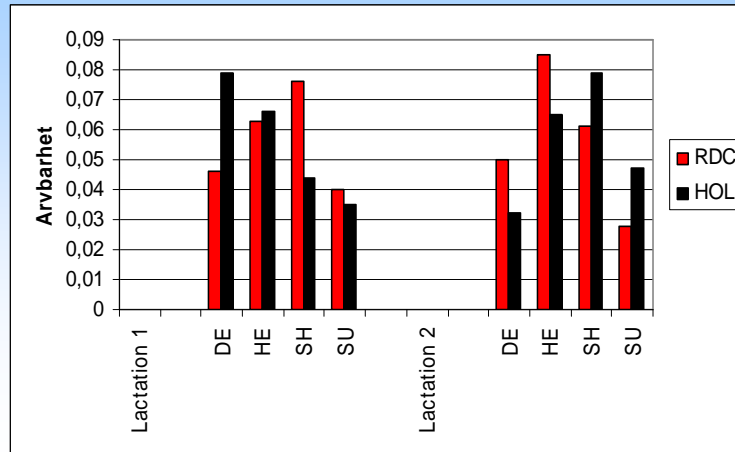
Number of hoof trimming records per month and year



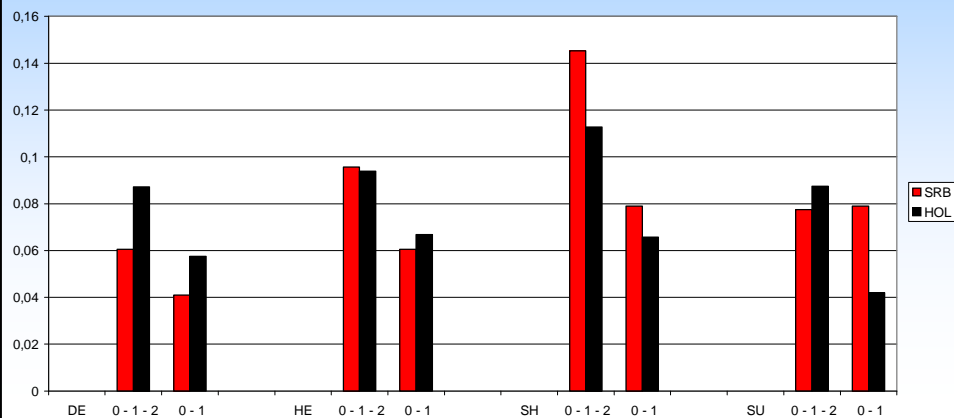
svensk mjölk  
SWEDISH DAIRY ASSOCIATION



## Heritabilities, Näslund 2008

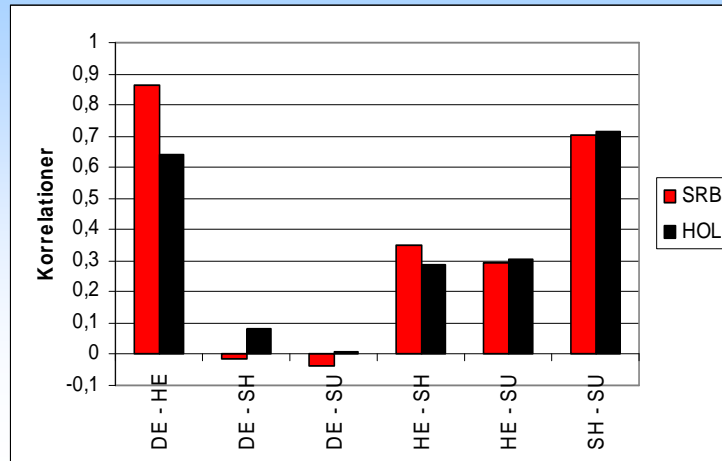


## Genetic standarddeviations 1st lactation SLU

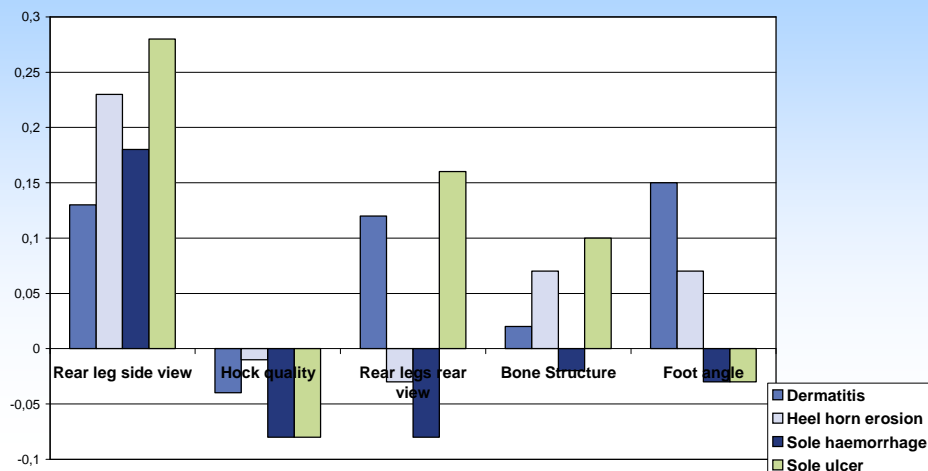


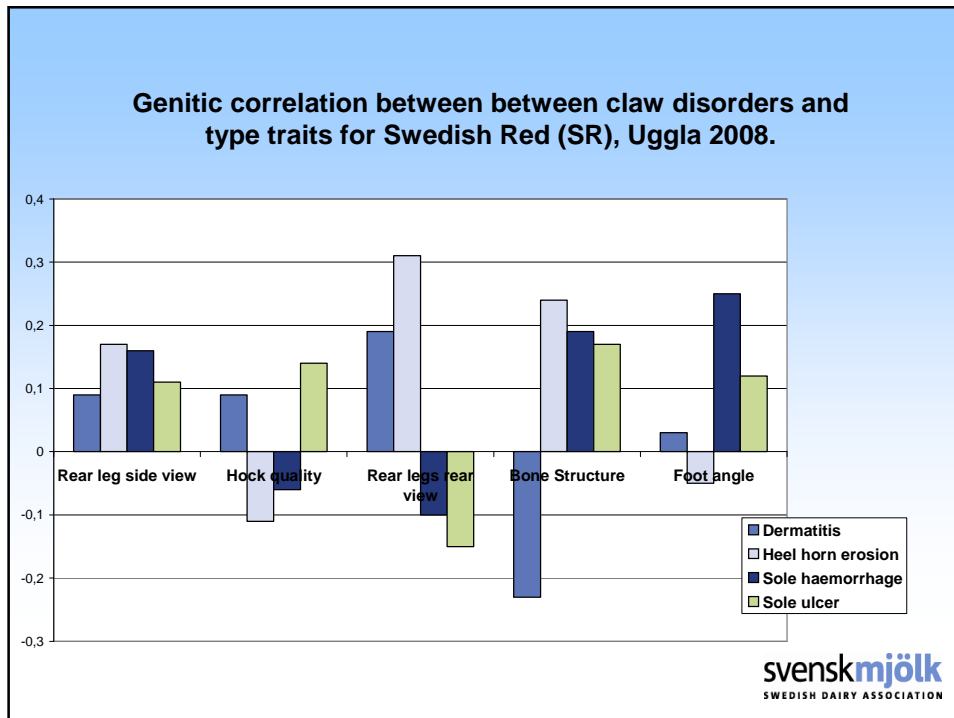


Genetic correlations –  
1st lactation, Näslund 2008



Genetic correlation between between claw disorders and  
type traits for Swedish Holsteins (SH), Uggla 2008.





## Others

- **Hoof diseases resistance** seems to have a positive connection with **increased survival**
- Especially Sole haemorrhage and sole ulcer
- But also Dermatitis and Heel Horn Erosion for SH

## **FRISKKO Smittskydd-Klövar**

Starting a campaign 2008 in order to sell an

Enhanced advisory activity in order to increase the hoof health in Swedish dairy herds

## **Summary**

- Hoof diseases recorded by hoof trimmers are very well suited for genetic improvement
- Hoof diseases so far the most promising goal trait for genetic improvement of feet and legs

## Summary

- Even a promising correlation between hoof diseases and survival
- Low genetic correlation between hoof diseases and feet and leg conformation

## Summary

- Recording of hoof diseases by hoof trimmers are practically possible as shown in Sweden
- Hoof trimmer records even a must for an effective hoof health care on the farm

